

Reitnouer Big Bubba



Big Bubba flatbed models boast a GVWR of 100,000 lbs. and are rated at 70,000 lbs. in 10 feet and 60,000 lbs. in 4 feet — a legend that continues to set the standard for heavyweights. Not bad for a trailer that weighs an average of 3,000 lbs. less than any steel trailer even approaching Big Bubba's hauling capacity.

This is 4MR's Reitnouer Big Bubba from FS19. I have added axle options, dunnage and storage box options, stake options, bulkhead, and updated it to work in FS22, and added the autoload function.

Reitnouer Big Bubba

Storage Location Options

You will need to position the locations after adding them.

None



One



Two



Three



Four

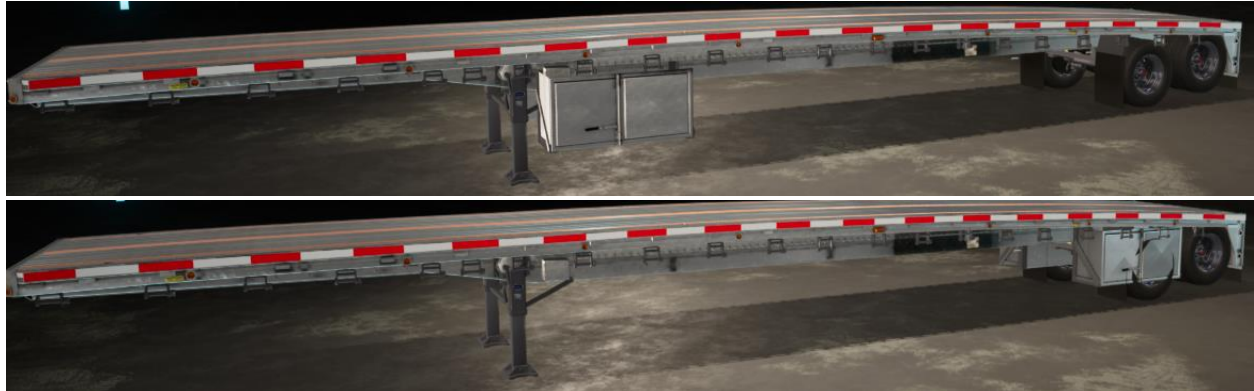


Reitnouer Big Bubba

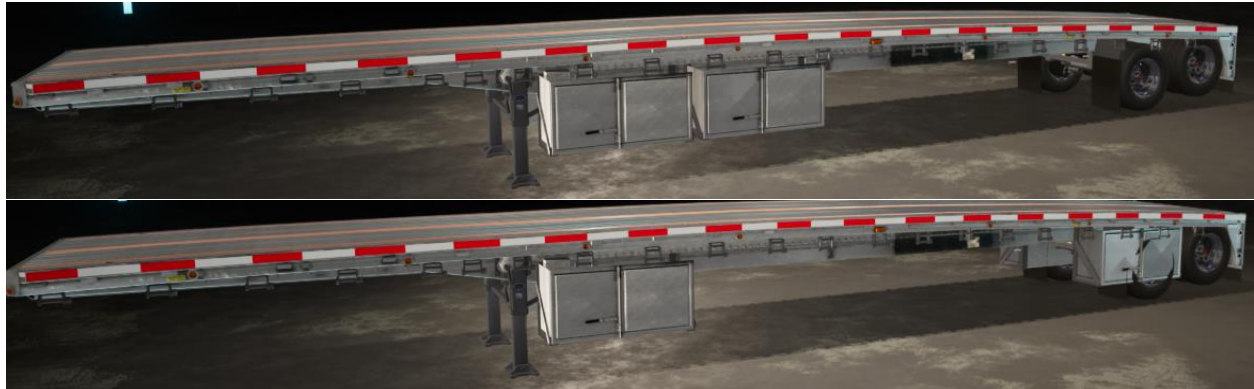
Storage Location

Each storage location can be moved independently in one foot increments. Below is the range for each storage location

Storage 1 Position 27ft to 0ft



Storage 2 Position 21ft to 0ft

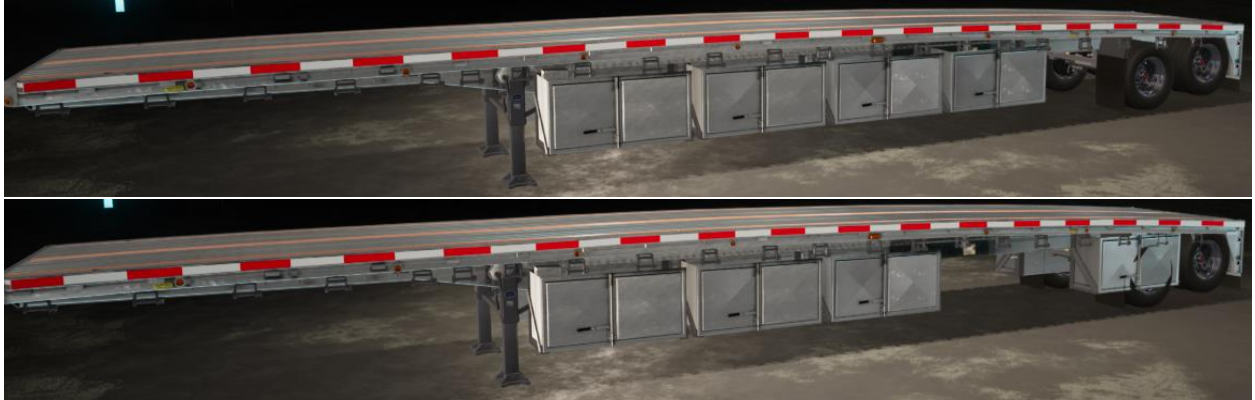


Storage 3 Position 15ft to 0ft



Reitnouer Big Bubba

Storage 4 Position 9ft to 0ft



Reitnouer Big Bubba

Storage Options for each storage location:

Left and Right Boxes



Left Box



Right Box



Left Rack



Right Rack



Left Box and Right Rack



Left Rack and Right Box



Left and Right Rack



Reitnouer Big Bubba

Rear Strobes:

No



Yes



Reitnouer Big Bubba

Oversize Load Sign

No



Split Over Size



Reitnouer Big Bubba

Canadian



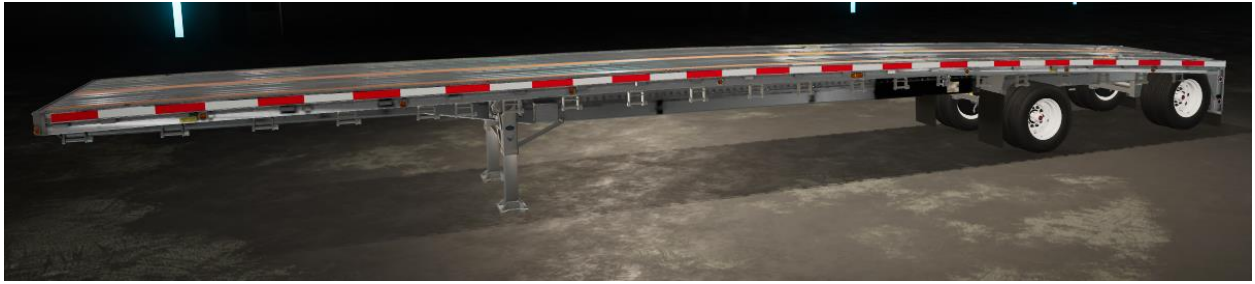
Full Over Size Load



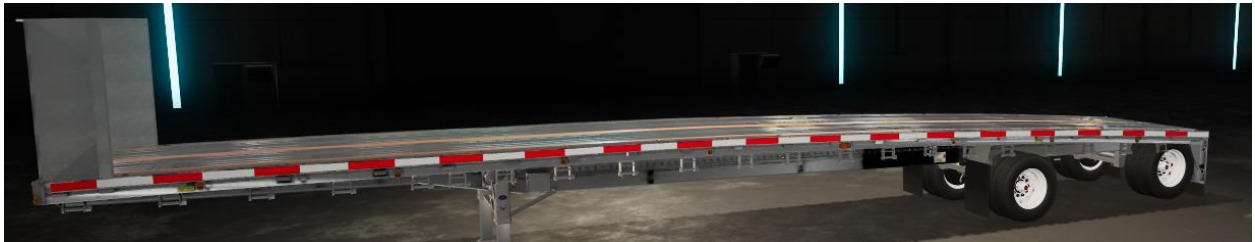
Reitnouer Big Bubba

Stakes:

No



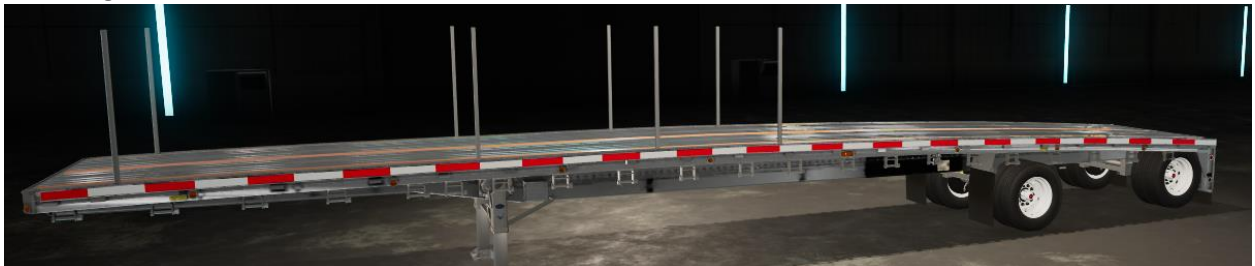
DOT Wrap Around Bulkhead



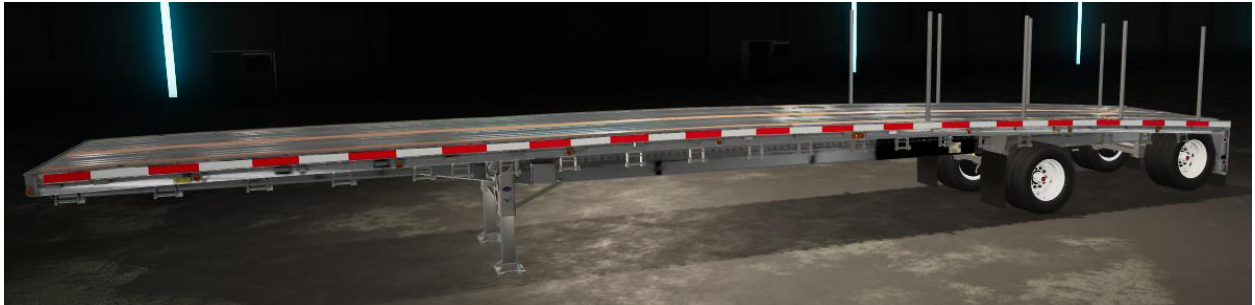
Short Stakes



Front Log

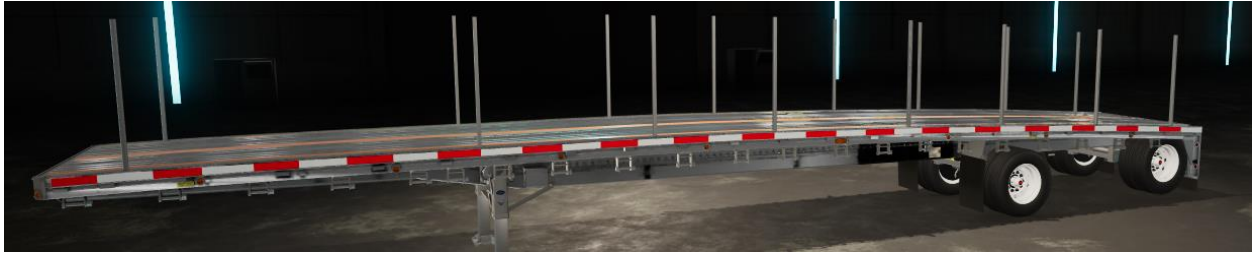


Rear Log

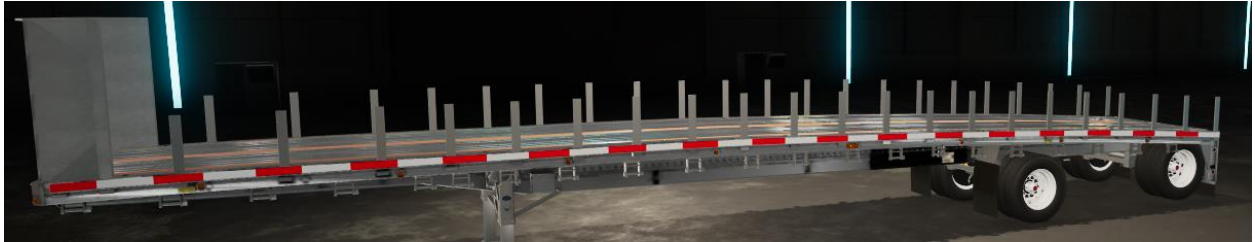


Reitnouer Big Bubba

Front and Rear Log



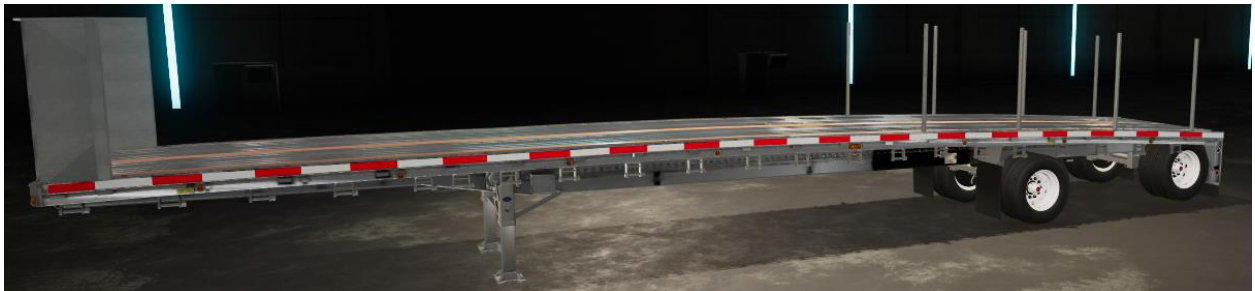
Short Stakes and Bulkhead



Front Log and Bulkhead



Rear Log and Bulkhead

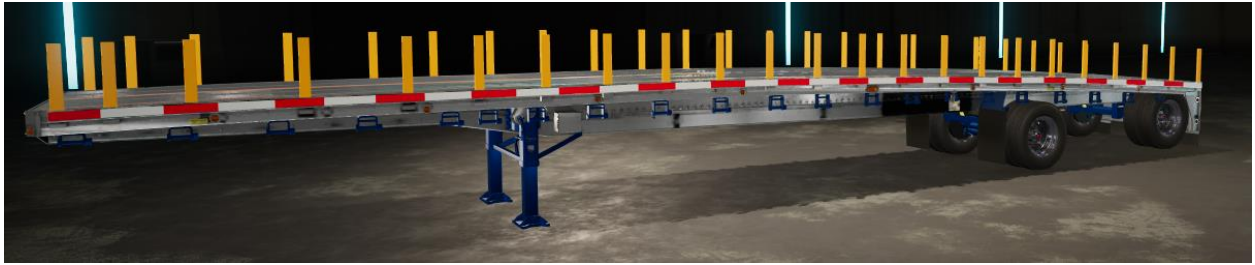


All Log and Bulkhead



Reitnouer Big Bubba

Chassis, Stake, and wheel color selection



License plate:



Attacher joint for 10ft Shipping Container:



Reitnouer Big Bubba

Attacher joint for Tarp

You will need to lift the tarp and place it at the head of the trailer



Tarp Controls

Decrease/Increase Height: `AXIS_FRONTLOADER_ARM` (pc j/n)



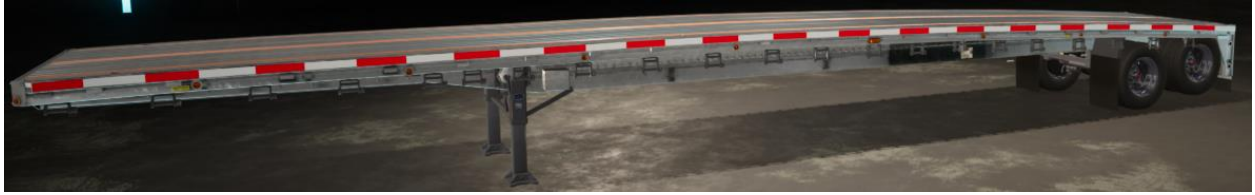
Expand/Retract: `AXIS_FRONTLOADER_TOOL` (pc k/m)



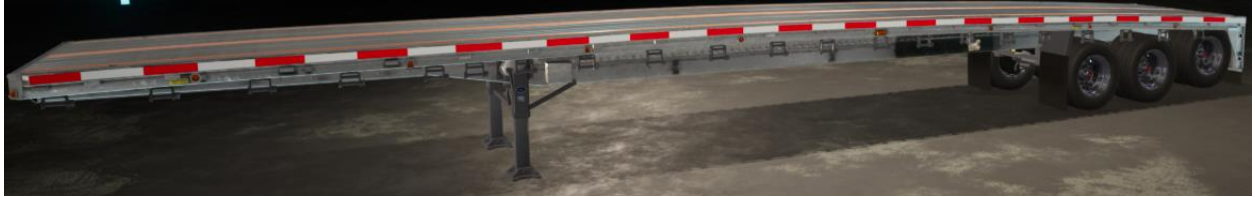
Reitnouer Big Bubba

Axle Options:

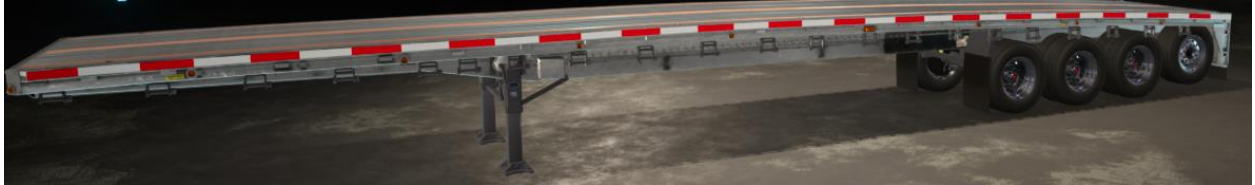
Two Axles



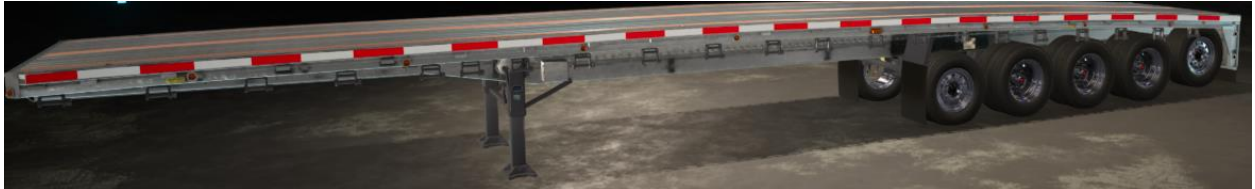
Three Axles



Four Axles



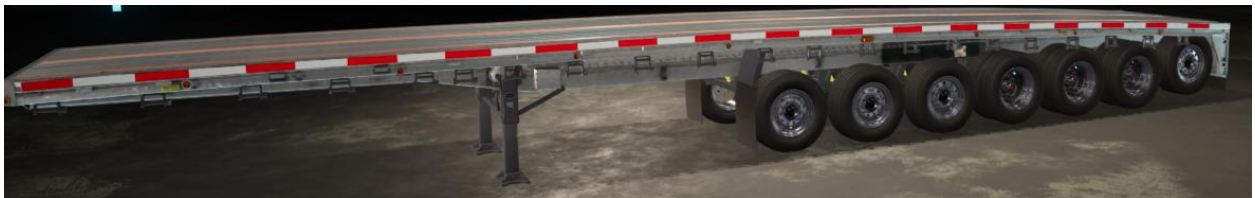
Five Axles



Six Axles



Seven Axles

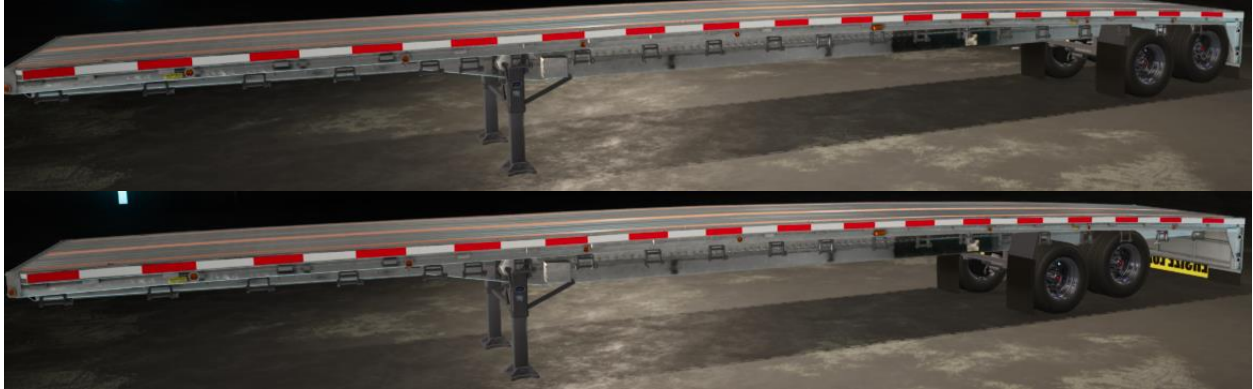


Reitnouer Big Bubba

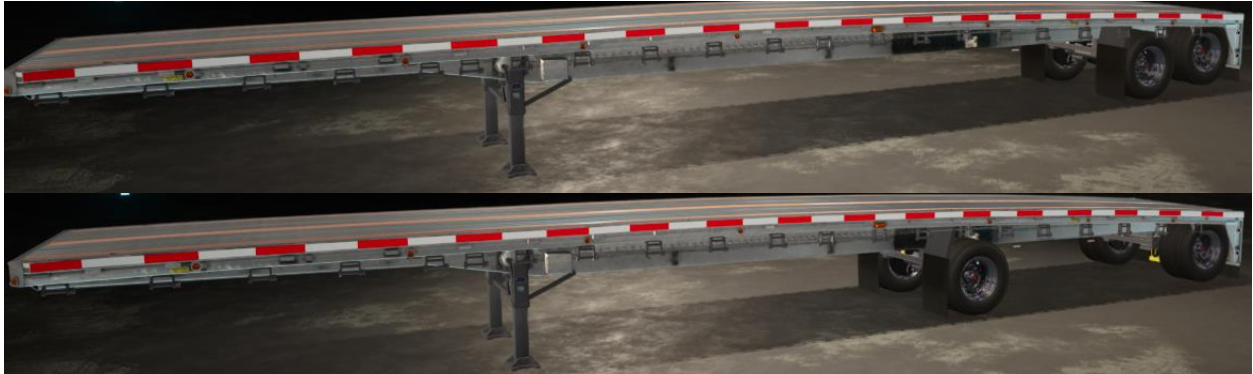
Axle Spacing

Axle 1 is measured from rear bumper. Each axle can be positioned independently measured from the previous axle so pay attention to where they are so they do not impact other components. For three or more axles, once the axle gets 6ft or more from the previous, the mud flap will be installed in front of the previous axle.

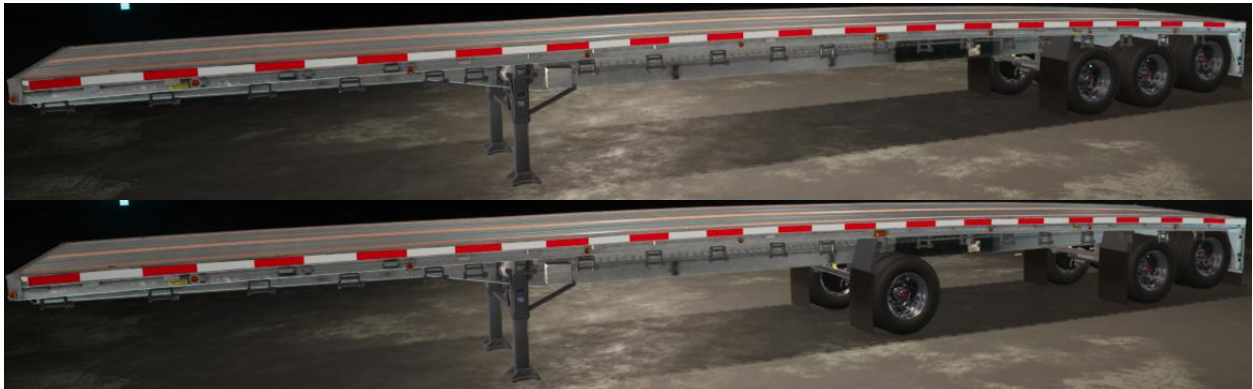
Axle 1 (rear most axle) 2ft to 8ft



Axle 2 (second from rear) 4ft to 15ft



Axle 3 4ft to 15ft



Reitnouer Big Bubba

Axle 4 4ft to 15ft



Axle 5 4ft to 15ft



Axle 6 4ft to 15ft



Reitnouer Big Bubba

Axle 7 4ft to 15ft



Reitnouer Big Bubba

Wheel Options

With three axles or more, you will start getting options for various steer and non steer options, with the most options being on the seven axle.

Outer Steer



Reitnouer Big Bubba

Front Steer



Reitnouer Big Bubba

Rear Steer



Reitnouer Big Bubba

First Two and Last



First Three and Last



Reitnouer Big Bubba

No Steer



Reitnouer Big Bubba

Lift Axles



Axle 1 (from Rear to front): `AXIS_FRONTLOADER_ARM` (pc j/n)

Axle 2: raises on fold

Axle 3: raises on fold

Axle 4: `AXIS_FRONTLOADER_TOOL` (pc k/m)

Axle 5: `AXIS_FRONTLOADER_ARM2` (pc lshift + j/n)

Axle 6: `AXIS_FRONTLOADER_TOOL2` (pc lshift + k/m)

Axle 7: `AXIS_FRONTLOADER_TOOL3` (pc lshift + lctrl + j/n)